


江苏顺乾新型材料有限公司 (东莞分公司)
Jiangsu Shunqian New Material Co., Ltd.

 生产基地: 中国江苏省泰州市泰兴市新竹科技工业园古高路89号
Address (Production Base): No. 89 Gugao Road, Xinzhu Science & Technology Industrial Park,
Taixing City, Taizhou city, Jiangsu province, China.

 外贸事业部: 中国广东省东莞市南城街道黄金路1号天安数码城F6栋703室
Address (International Business Department): Room No.703, Building No. F6, Tianan Digital City,
No.1 Huangjin Road, Nancheng District, Dongguan City, Guangdong Province, China.

 Website: www.ShineStone1319.com(国际)
www.ShineStone1319.net(国内)
Alibaba: <https://sqxxcl.en.alibaba.com>

 E-mail: admin@shinestone1319.com

 服务热线: 4001181319



WE CREATE FOR YOU

顺乾石™
ShineStone® Solid Surface



ABOUT US 关于我们

江苏顺乾新型材料有限公司，是一家集研究、开发、生产、销售于一体的高科技实体企业，专业从事新型环保建筑装饰材料的研发与制造。公司从德国引进最先进的设备及生产工艺，采用微波高温等技术，这种全新工艺不仅能节约成本，还能生产出更环保的材料。公司已通过 ISO9000 认证，产品均经国家权威检测机构检测。公司生产的实体面纯亚克力人造石，其生产技术在同行业中处于领先地位，在华东、华南地区得到了客户的一致认可。

目前，我公司已将纯亚克力实体面材拓展至多个系列，产品广泛应用于商用空间装饰、文化娱乐场所、医疗行业等领域，畅销国内及海外市场。自创建以来，公司始终秉承“品质第一，客户至上”的经营理念，严格恪守“质量取胜”的宗旨，更加注重研发与应用。

Jiangsu Shunqian New Material Co., Ltd. is a high-tech entity enterprise integrating research, development, production, and sales, specializing in the research, development, and manufacturing of new eco-friendly architectural decorative materials. The company has introduced the most advanced equipment and production processes from Germany, utilizing technologies such as microwave high-temperature processing. This innovative process not only saves costs but also produces more environmentally friendly materials. The company has obtained ISO9000 certification, and all products have been tested by national authoritative inspection agencies. The solid surface pure acrylic artificial stone produced by the company is at the forefront of production technology in the industry and has received unanimous recognition from customers in East China and South China regions.

Currently, our company has expanded its pure acrylic solid surface material range to multiple series. Our products are widely used in commercial space decoration, cultural and entertainment venues, the medical industry, and other fields, selling well both domestically and internationally. Since its establishment, the company has always adhered to the business philosophy of "quality first, customer first" and strictly adhered to the principle of "quality wins". We place greater emphasis on research and development as well as application.

品质第一
Quality First

客户至上
Customer Supreme

ISO9000
质量认证
—
ISO9000
Quality Certification

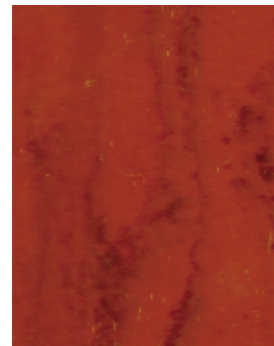
德国进口
设备工艺
—
German Imported
Equipment & Technology

微波高温
全新技术
—
Microwave High-
Temperature Technology

COLORS 色彩

暗纹系列 Veining

灵动的纹路被融入其中, 在赋予安宁的同时, 更添神秘变化, 可以在任何环境中焕发活力。
The veining collection integrates implicit movement into each design which intrigues both tranquility and rejuvenation in the space.



PM521



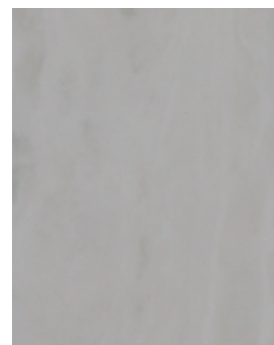
PM523



PM525



PM526



PM527



PM528



PM529



PM532

纯色系列 Solid color

纯色是极简之美, 传递着一种纯粹的力量, 既包容一切, 也彰显个性, 重新定义空间美学的高级感。
The solid collection conveys the minimalist beauty of power. Simplicity and purity could embrace all differences in the space while still revealing personality and redefining the classics of the art of the space.



PM6906



PM6901



PM6903



PM6206



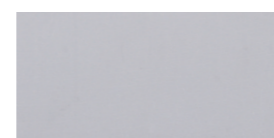
PM6954



PM6801



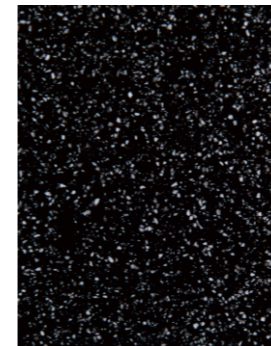
PM6953



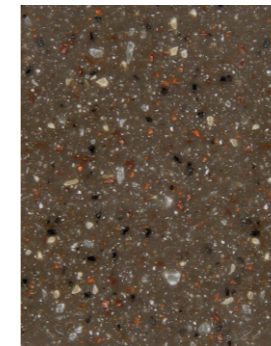
PM6951

颗粒系列 Particle

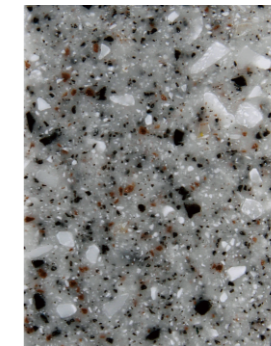
各种白色、灰色、棕色和黑色, 结合细腻的颗粒, 将自然元素与当下流行色彩融为一体, 支持当今注重健康的室内设计趋势。
Blending natural elements with creative flair and current colors, a variety of calming whites, greys and browns, married together with soft movement or fine particulate patterns, support today's wellness-focused interior design trends.



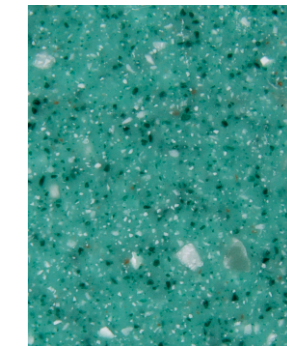
PM7305



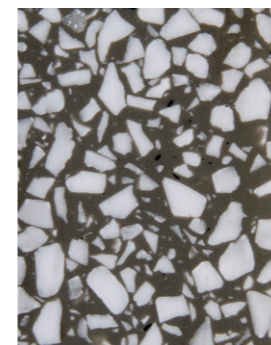
PM7235



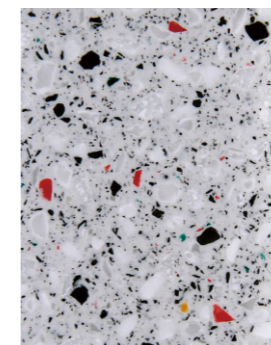
PM8807



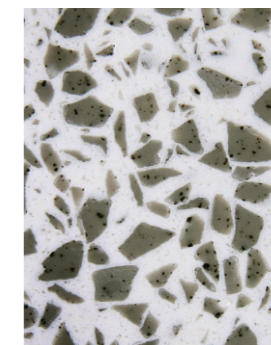
PM8240



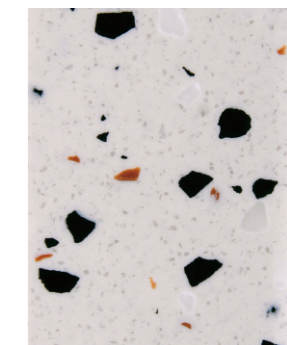
PM9803



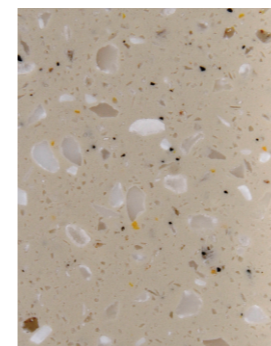
PM9806



PM9801



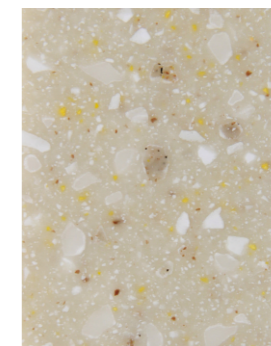
PM9805



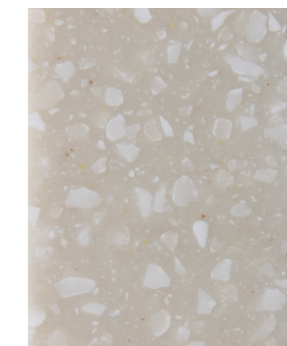
PM8717



PM7440



PM7233



PM8708

注: 印刷色与实际颜色略有差别, 在指定和订购前请以实样为准。
Note: The color image on our catalogue is subject to the accuracy of printing limitations. Please review actual samples before specifying and ordering.

CHARACTERISTICS 特性



设计无限 Limitless Design

令人惊叹的天然石材外观，不规则的颗粒，纹路和变化，晶体发出的闪烁光芒，优美的镶嵌，半透光效果，以及丰富的定制选择。

Stunning natural stone looks embedded in small to large particulates, veining and movement, quartz-inspired sparkle, elegant inlays, translucency and an abundance of custom design options.



无缝接合 Seamless

无缝的防水拼接不会滋生细菌和霉菌，确保食品接触符合NFS标准。

Inconspicuous waterproof seams eliminate the growth of odor-causing mold and mildew. NSF compliant for food contact.



持久如新 Stain-Resistant

无孔的材料具备耐污染性和低维护性，减少你对污渍的担忧，更关注其视觉创意。不像花岗岩，表面无需涂层密封。

Non-porous material allows for stain resistance and low maintenance. so you can worry less about spills or messes and care more about your creative vision. Unlike granite, no sealing is required.



可修复性 Repairable

经由专业安装人员进行操作，可以轻松修复划痕、缺口、凿痕或裂缝。

Scratches, chips, gouges or cracks could be repaired to the original condition by a professional fabricator.

APPLICATIONS 应用



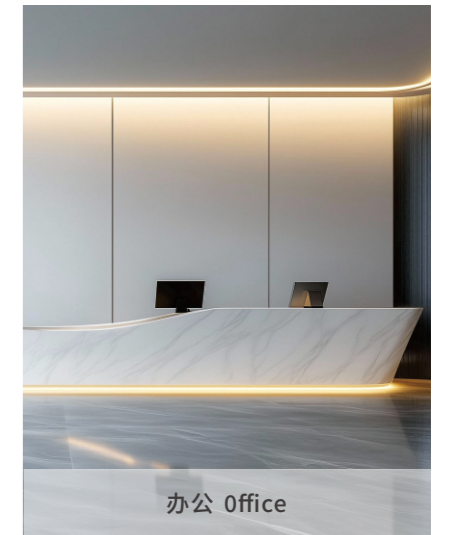
医疗 Healthcare

医院 Hospital
诊所 Clinic
护理机构 Long-term Care
实验室 Laboratory
药房 Pharmacy
养老院 Nursing Home



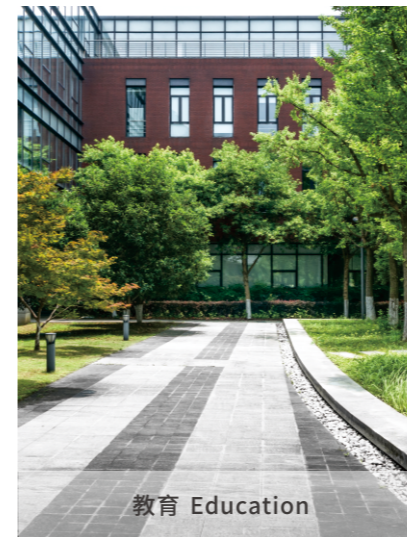
商业 Commercial

商场 Shopping Mall
酒店 Hotel
餐厅 Restaurant
便利店 Convenience Store



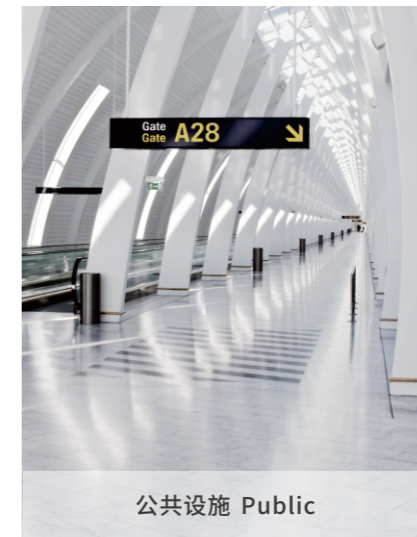
办公 Office

企业 Enterprise
政府机构 Government
写字楼 Office Building
办公家具 Office Furniture



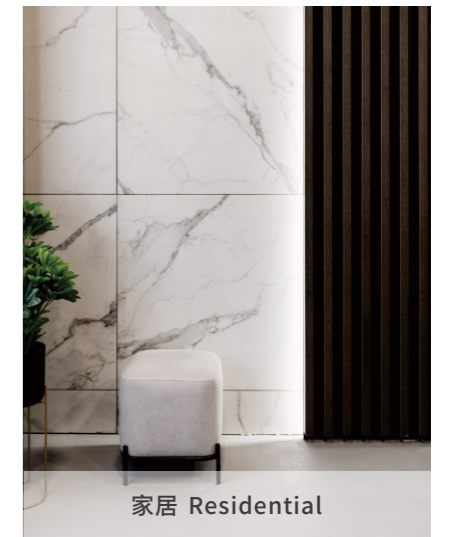
教育 Education

图书馆 Library
幼儿园 Kindergarten
中小学 Primary and Secondary Schools
大学 University



公共设施 Public

机场 Airport
火车站 Railway Station
体育场 Stadium
剧院 Theater
会议中心 Conference Center
游轮 Cruise Ship
火车 High-speed Train



家居 Residential

别墅 Villa
公寓 Apartment
住宅 Residential Building



顺乾石™是现代医院的理想选择, 防火、无毒、无孔, 可进行无缝拼接, 易于清洁维护, 不会滋生细菌和霉菌, 可以应用在护士站、诊疗室、手术室、病房、实验室、卫生间等区域的家具台面和空间墙面, 为就诊患者和医护人员提供一个安全健康舒适的医疗环境。

ShineStone® solid surface answers all the challenges in a modern healthcare space: fire rated, non-toxic, seamless joint, easy clean, fungi resistant and anti-microbial. Heavy traffic areas include but not limited to nurse station, clinic, operation room, ward, testing lab and washroom. ShineStone® solid surface is committed to safeguard the patients and health care professionals by creating a comfortable, hygienic and relaxing space.





商业 Commercial



从餐厅的点餐区,到取餐区,再到用餐区;从酒店的接待大堂,到客房淋浴间;从商场的问询服务台,到休息区,再到洗手间,商业空间的设计总是别具风格,功能出色,力求给客人留下美好的第一印象。顺乾石™色彩风格多样,浅色系的半透光性可以与灯光或照明设备结合,实现令人惊喜的设计构想,帮助提升客人体验,营造愉悦轻松的消费环境。

Design with identity has always been the high ground for commercial space. From reception to dining area for catering, from lobby to guestroom for hospitality, from information center to rest areas for shopping plaza, all pursuing outstanding designs and functions to impress customers for a coming back. ShineStone® solid surface offers versatility in both colors and styles. The light go-through feature of ShineStone® light colored solid surface could hide and play with the lighting equipment to create pleasant surprise for a great customer experience.





| 办公 Office



简洁、舒适、方便的办公空间设计可以提高员工的工作效率及创造力，无论是私人办公室还是公共活动区域，顺乾石™均能确保这些区域的设计持久如新。其坚固、耐用、易清洁、耐污染，最适合做为办公台面和空间墙面；其强大的可塑性可以打造多变的艺术造型，呈现极具美感的现代办公空间。

Modern office design should inspire creativity and facilitate efficiency, no matter individual workstation or public areas. ShineStone® solid surface gives assurance for both inspiration and request of lasting service year. Strong, durable, easy clean and stain resistant are the best application for office countertop and wall. Different art forms solid surface could be shaped to makes the design go beyond imagination for a modern office space.





| 教育 Education



教育设施需要顺应当下潮流、增强社群自豪感和体现面向未来教育宗旨的饰材，激发学生的创新学习氛围。对于长期投资的学校而言，选择持久耐用且容易维护的顺乾石™至关重要，可用于教室、多媒体中心、图书馆、餐厅等场所。顺乾石™产品丰富，采用和谐的色彩、定制的造型，让校园环境更显迷人风采。

Education facilities are required to apply materials which could meet up to multiple targets by boosting the community integrity with a vision for the future while inspiring the creativity. As a long-term investment for the future talents, the choice of ShineStone® solid surface is equivalently rewarding with diversified application to classroom, multi-media center, library and canteen. The harmony created by the rich color range and the unique design achieved by the play of shaping magic will make the campus such a pleasant place to stay.



| 家居 Residential



顺乾石™具有细腻的触感、流行的色彩，可雕刻、可镂空、可塑型、可无缝拼接，还可与其他饰材相结合，无论是制作成书架，还是橱柜，亦或是洗手台，都是兼具美观性和功能性的最佳作品，赋予居家空间一种优雅舒适的高品质生活。

ShineStone® Solid Surface feels an exquisite touch with varieties of colors leading the trend. Featured with being carvable, shapable and seamlessly joinable, ShineStone® solid surface could complement best with other decorative materials to bring out the essence of the designs. Bookshelf, kitchen cabinet or wash countertop could be Wilsonart total solution which fulfill the top functional performance request without compromising on the aesthetic needs. ShineStone® solid surface makes your living space with elegance, comfort and style.



CARE AND MAINTENANCE

维护与保养

预防 Precaution

顺乾石™表面不能直接放置加热后的平底锅、煎锅、茶壶等器皿，过热会导致面材损坏，建议使用隔热垫或隔热架。
Please don't place the hot pan or heating instruments directly on the surface of ShineStone® Solid Surface and the heat insulation pad is always suggested to be used for protection.

顺乾石™不宜长时间处于80°C(170°F)以上的温度环境中。
Please don't expose ShineStone® Solid Surface to temperatures above 80°C (170°F) for long time.

避免让顺乾石™接触强酸强碱，例如除漆剂和烤箱清洁剂等。一旦接触，请及时用清水冲洗，以避免因长久接触而产生污点。
Please avoid direct contact with strong acid and alkali, such as paint remover and oven cleaner. In case of that, rinse with water immediately to avoid stains.

切勿在顺乾石™表面直接进行切割。
Please don't do the cutting or chopping on the surface of ShineStone® Solid Surface.

清洁 Cleaning

普通污渍:
Common stains:

通常可使用肥皂、清水或含氨清洁剂，加上海绵或湿布来清洗顺乾石™表面，然后用毛巾擦干。
It is usually to use soap, water or ammonia-containing cleaner with a sponge or wet cloth to clean the surface of ShineStone® Solid Surface, and then dry it with a towel.

顽固污渍:
Stubborn stains:

亚光表面: 使用研磨清洁剂和适当的擦垫，以圆周运动的方式进行清洗。
Matt surface: clean in a circular motion using an abrasive cleaner and a suitable mat.

半抛光表面: 将清洁剂用漂白剂稀释后，用适当的擦垫进行擦洗，方式为圆周运动。
Semi-polished surface: dilute the detergent with bleach and scrub with a suitable mat in a circular motion.

抛光表面: 使用海绵擦垫或者白色抛光剂，方式为圆周运动。
Polished surface: use a sponge mat or a white polishing agent in a circular motion.

消毒 Disinfecting

可用稀释的家用漂白剂擦拭(水与漂白剂之比为1:1)顺乾石™的表面。
Wipe ShineStone® Solid Surface with diluted household bleach.

注 (Note)
可用清水清洗的物质: 普通碱性溶液、咖啡、果汁、家用香皂、过氧化氢、牛奶、指甲油去除剂、橄榄油、酱油、鞋油、合成洗涤剂、茶、醋。
Substances that can be cleaned with water: common alkaline solution, coffee, juice, household soap, hydrogen peroxide, milk, nail polish remover, olive oil, sauce, shoe polish, synthetic detergent, tea, vinegar.

可用家用清洁剂清洗的物质: 可用家用去污剂清洁的污染物: 化妆品、蜡笔、眼影、染发剂、番茄酱、油性墨水。
Pollutants that can be cleaned with household detergents: cosmetics, crayons, eye shadow, hair colorants, ketchup, oily inks.



TECHNICAL INFORMATION

技术参数

性能 / Property	标准 / Test Standard	标准值 / Standard Value
巴氏硬度 / Barcol Hardness	ASTM D2583-13	≥ 60
落球冲击 / Ball Impact Resistance	ISSFA-2-01	无破损 / No Fracture, 冲击高度 / Drop Height ≥ 1525mm
弯曲强度 / Flexural Strength	JC/T 908 2013	≥ 40MPa
弯曲弹性模量 / Flexural Modulus	JC/T 908 2013	≥ 6.5GPa
耐高温性 / High Temperature Resistance	JC/T 908 2013	无明显变化 / No Significant Change
线性热膨胀系数 / CLTE	JC/T 908 2013	≤ 5.0 × 10 ⁻⁵ /°C
耐污染性 / Stain Resistance	JC/T 908 2013	污染值 / Total Score ≤ 64 最大污迹深度 / Maximum Stain Depth ≤ 0.12mm
耐磨性 / Wear Resistance	JC/T 908 2013	≤ 0.6g
放射性 / Radionuclides	JC/T 908 2013	内照射指数 / Internal Exposure Index ≤ 1.0 外照射指数 / External Exposure Index ≤ 1.3
香烟燃烧 / Cigarette Burns	JC/T 908 2013	无明显燃烧或阴燃 / No Open Flame or Smouldering
氧指数 / Oxygen Index	JC/T 908 2013	≥ 40



PRODUCT SPECIFICATION

产品规格

常规厚度 / Thickness	6mm, 12mm
常规尺寸 / Size	760x2440, 3050, 3680

说明:如有其它厚度和尺寸需求,可向江苏顺乾新型材料有限公司咨询。

Note: If you have any other thickness and size requirements, you can consult Jiangsu Shungan New Materials Co., LTD.

GLOBAL LOCATIONS

全球据点



- 韩国 South Korea
- 日本 Japan
- 新加坡 Singapore
- 越南 Vietnam
- 菲律宾 Philippines
- 印度 India
- 印度尼西亚 Indonesia
- 斯里兰卡 Sri Lanka
- 阿联酋 United Arab Emirates
- 迪拜 Dubai
- 卡塔尔 Qatar
- 科威特 Kuwait
- 约旦 Jordan
- 伊拉克 Iraq
- 土耳其 Turkey

- 塞浦路斯 Cyprus
- 中国台湾地区 Taiwan, China
- 意大利 Italy
- 英国 United Kingdom (UK)
- 德国 Germany
- 波兰 Poland
- 法国 France
- 西班牙 Spain
- 葡萄牙 Portugal
- 爱沙尼亚 Estonia
- 捷克 Czech Republic
- 希腊 Greece
- 俄罗斯 Russia
- 阿尔及利亚 Algeria
- 马达加斯加 Madagascar

- 南非 South Africa
- 乍得 Chad
- 安哥拉 Angola
- 坦桑尼亚 Tanzania
- 尼日利亚 Nigeria
- 乌干达 Uganda
- 摩洛哥 Morocco
- 美国 United States (USA)
- 加拿大 Canada
- 墨西哥 Mexico
- 哥斯达黎加 Costa Rica
- 秘鲁 Peru
- 澳大利亚 Australia
- 等...